



About CzeCCAM

The Czech Association for Autonomous and Cooperative Mobility (CzeCCAM) was founded at the beginning of 2023 with the goal of promoting an interdisciplinary and holistic approach to cooperative and automated transport.

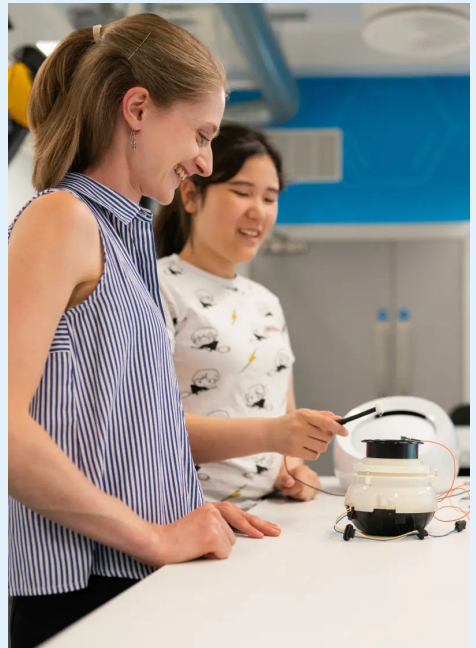
It brings together key stakeholders in the fields of science and development in the Czech Republic with a long-term view of growing in relevant supporting areas such as law, the environment, and humanities. Its aim is to create a truly holistic design of new connected, cooperative, and automated mobility built on human and societal needs.

Research

The applied research in the field of autonomous transport and related new mobility systems is highly interdisciplinary. This implies that the problems at hand cannot be solved by small, distributed groups or start-ups. It requires the close cooperation of researchers, municipality representatives, and industry experts.

At the same time, it is not possible for a relatively small country such as the Czech Republic to have such a large number of cutting-edge teams at its disposal to afford competition in research. Involvement and cooperation of different stakeholders is a key assumption in achieving relevant outcomes within an acceptable time frame.

CzeCCAM is a **cooperative environment for all stakeholders in the area**. It offers a common space for aligning visions of future mobility systems and services, cooperation on mutual R&D projects and to promote conceptual think-tank like outcomes to relevant governmental institutions.



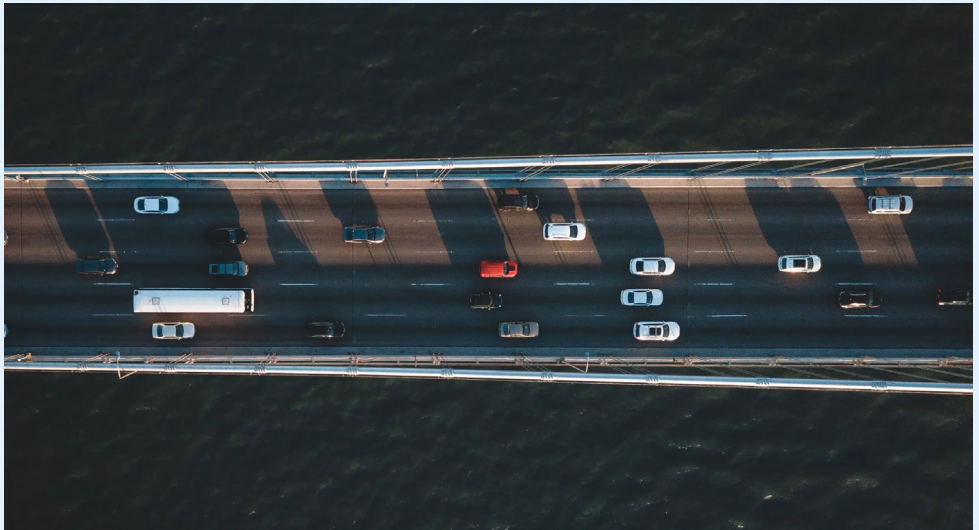
Focus of CzeCCAM

"Cooperative environment, not just vehicles"

The focus on **holistic research, design, and development of connected, cooperative, and automated human-centric mobility is crucial:**

- The control algorithms for cooperative traffic management should be distributed from the traffic management centers through traffic controllers to particular vehicles.
- The communication technology used for V2X (vehicle-to-everything communication) should be shared with other purposes, such as mobile communications, to reduce overall energy demands
- At the same time, technology should be developed for including all (road) transport users in a connected environment

For this purpose we will establish a **common**, however **distributed, R&D laboratory** to further investigate the interactions between all cooperative and also non-connected entities in road transport. These "United Labs" will follow the same low energy demanding approach and further support cooperation in CCAM topics.



CzeCCAM

📍 Na Ořechovce 580/4
Prague 6, 162 00
Czech Republic

✉ skolilova@fd.cvut.cz

